

FAIRFIELD POND FAUNA SURVEY 22nd September 2022

Following the work on the some of the ponds as part of the Lancashire Wildlife Trust Newt Project, it was decided to start surveying the ponds on a more regular basis, to see how the fauna and flora develop.

The Flora Ponds were surveyed as part of the City Nature Challenge on May 1st2022, led by North Lancashire Wildlife Group.

Hilary Smith, Peter Tilley and Oliver Fulton surveyed four ponds on 22nd September 2022

Results of 22.9.22 Survey

Flora Pond 2, Willow Pond (old), Anna's Pool, and Lower Sowerholme Pond were surveyed using nets, between 9.00 and 11.30 on a cool, cloudy day. Photographs were also taken to confirm identification later.

Species	Flora Pond 2	Willow Pond (old)	Anna's Pool	Lower Sowerholme
Bloodworm				★
Common frog	★	★	★	★
Damselfly nymph				★
Dragonfly nymph		★		★
Freshwater hoglouse			★	★
Freshwater Shrimp	★		★	
Leech			★	
Lesser Water boatman	★	★		
Mayfly nymph	★	★	★	
Midge larva	★	★	★	
Pond Skater	★			
Pond snail	★			
Ramshorn snail			★	
Smooth newt juv.				★
Water flea		★	★	
Water mite	★			
Water beetle larva	★	★	★	
Water boatman		★		

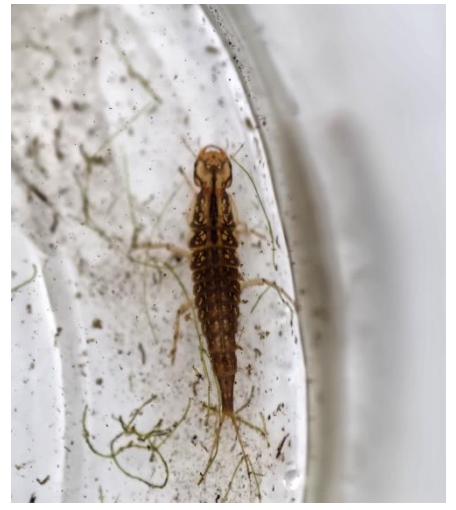
Photographs



Damselfly nymph



Freshwater Shrimp



Water Beetle nymph



Freshwater Hoglouse



Lesser Water Boatman



Smooth Newt juvenile



Dragonfly nymph



Water Beetle larva

Conclusion

Although this survey was a very small snapshot of the fauna of the ponds, late in the season it demonstrates that there is a good diversity of species in all the ponds, despite disturbance earlier in the year. This type of survey will be done of all ponds at least twice next year.